

The ultimate personal alarm for independent living.



 **safe@home**
by Threat Protect

 **THREAT
PROTECT**

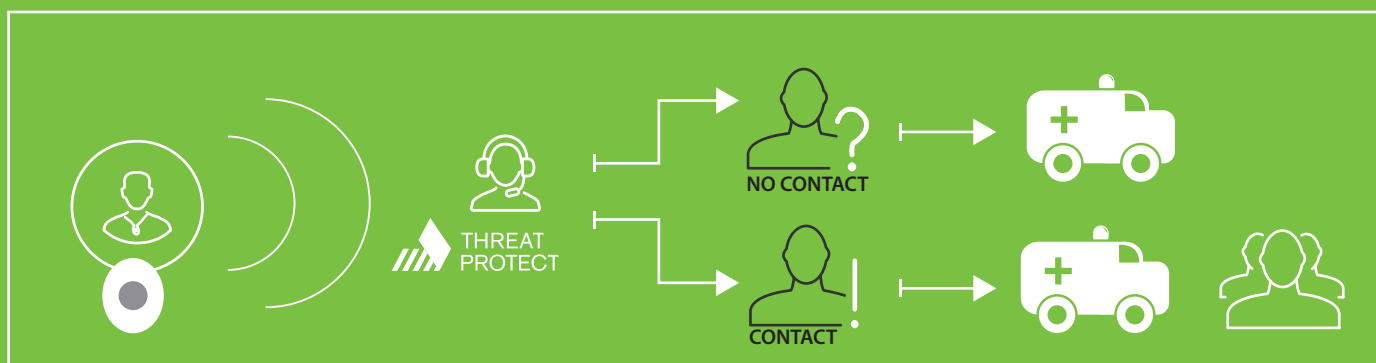


safe@home is the new personal monitoring system offered by Australia's leading security company, Threat Protect.

This innovative system acts as a personal alarm, with an optional fall detector, providing peace of mind for family members who have loved ones living independently.

safe@home is worn as a Pendant in a watch, clip-on or necklace form. If you are in distress, you simply push an emergency button on the Pendant, which connects to a Base Station installed in the home that signals for assistance. The Base Station acts like a handsfree phone connecting you to the Threat Protect Monitoring Control Centre where the appropriate response can be made.

An optional fall detector can sense a fall and activate an alert on its own without the need for you to push the emergency button.



KEY FEATURES

Easy to Wear

The Pendant is discreet and non-intrusive and may be worn as a necklace, clip-on or watch. It is waterproof, lightweight and has a long life battery so you can go about all your daily tasks without any compromise... you can even wear it in the shower or bath.

24/7 In Home Monitoring

The miniature transceiver in the Pendant provides 24 hour monitoring with support at the press of a button, giving reassurance that there is someone to help at all times. The system will work in and around your home.

Quick Response

Rest assured, we will act if an alarm is signalled. We will try and make contact with you and then make an assessment of what action needs to take place whether it be calling an ambulance, the police, the fire brigade or your family, friend or neighbour. In the event we cannot communicate clearly with you, an ambulance will immediately be dispatched.

Falls Detection (Optional)

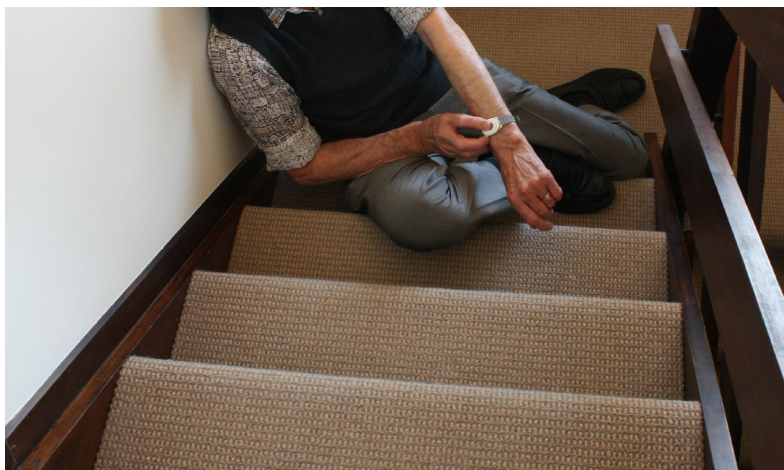
safe@home can be set up to detect a fall. If you fall and do not move, safe@home will send a fall alert to Threat Protect's Monitoring Control Centre. If you do not cancel a pre-alarm, our team will try and make contact with you. If we cannot make contact, we will follow a specific response procedure and send help.

No phone line needed

safe@home is a stand alone system. It is not dependent on a phone line or the Internet to work. safe@home is also independent of the NBN.

Fail Safe System

safe@home's signal is tested remotely twice a day by Threat Protect to ensure the system is working. If there are any issues, you'll be the first to know. The safe@home Base Station comes with a back up battery so if there is no power, there is no issue.



Mobile Unit

Our Base Station will work in all areas covered by the Telstra mobile network. This means you can take your safe@home system with you if you're planning on going on holiday. You simply need to pre-advise us so we can record your correct location.

NDIS Approved

safe@home is NDIS approved so some people will receive full or a partial rebate for the cost of the system and service.

Rebates

It's also worth checking with your local council and insurance provider to see if you are eligible for any other rebates.

NO UP FRONT COST ONE LOW MONTHLY FEE.

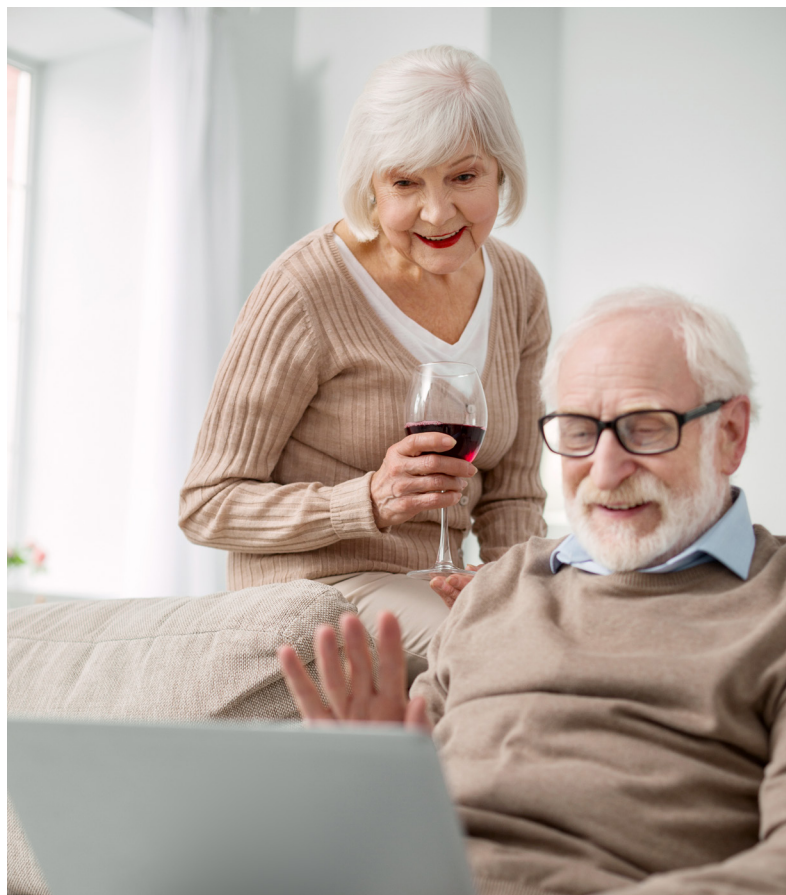
At Threat Protect, we believe safe@home should be accessible to everyone. We offer this system at a low monthly fee with no upfront cost. This includes lifetime batteries and maintenance.

With a small extra cost you can add an extra Pendant or upgrade to a fall detector.

Please see our full Terms and Conditions on our website threatprotect.com.au/safeathome

Independence can have a huge impact on you or your loved ones long-term wellbeing.

safe@home provides peace of mind for the individual, and for the people who care for them.



PRODUCT SPECIFICATIONS

PHYSICAL CHARACTERISTICS

Styles	Pendant with surgical stainless steel chain and clasp, or watch with durable polyurethane strap in light grey. Kit with attachments to interchange between Pendant, necklace, watch, clip-on.
Dimensions	40 x 32 x 11mm excluding attachment method.
Waterproof	IP68 waterproof in hot and cold water.
Weight	11.8 grams, excluding attachment method.
POWER	
Battery	Typical use sees a minimum battery life of 5years, non-replaceable
RADIO	
Radio Frequency	Operates in 869MHz (European social alarm frequency band) and 916MHz
Range	300m+in open air.
Two Way Radio	Base unit confirms signal reception to transceiver.

safe@home Transceiver Complies With:

EMC:	(EMC) Directive 2004/108/EC
Safety:	IEC 60950 -1:2001, BS EN 60950 -1:2002
Radio Frequency:	ETSI EN 300 220:2010 Class 1 (EMC and radio spectrum)
Social Alarm:	BS EN50134 -2:200
RoHS:	Compliant



safe@home
by Threat Protect